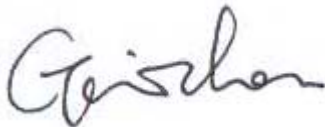


Applicant : Hangzhou Powerflow Technology CO. LTD
Address : Unit E, NO. 11 XiYuan Eight Road, XiHu District, HangZhou City
Sample Name : Intelligent Valve Positioner
Tested Model : 1880 Series
Manufacturer : Hangzhou Powerflow Technology CO. LTD
Sample Receiving date : 2019-10-15, 2019-11-15
Test period : 2019-10-15 – 2019-10-24, 2019-11-15 – 2019-11-20
Test Requirement : The Restriction of the Use of Certain Hazardous Substances in Electrical and Electronic Equipment, RoHS Directive 2011/65/EU and its amendment Directive (EU) 2015/863.
Test Method : Please refer to next page(s).
Test result : Please refer to next page(s).
Conclusion : Based on the verification results of the submitted sample(s), the results of Lead(Pb), Cadmium(Cd), Mercury(Hg), Hexavalent Chromium(CrVI), Polybrominated biphenyls(PBBs), Polybrominated diphenyl ethers(PBDEs), Dibutyl phthalate(DBP), Butyl benzyl phthalate(BBP), Di-2-ethylhexyl phthalate(DEHP) and Di-iso-butyl phthalate(DIBP) content in the tested part(s) comply with the requirements as set by RoHS Directive 2011/65/EU and its amendment Directive (EU) 2015/863.
Note : The test results are related only to the tested items.

ORIGINAL

Authorized signature



Lab Manager: Gavin Zhou



2019-11-26

This report is only responsible for the tested sample(s) from the client, the testing result(s) is used for scientific research, teaching or internal quality control. Without the writing agreement of the company, the client is not allowed to copy the report in part (entire copy is excepted).

A. Pb, Cd, Cr(VI), Hg, PBBs&PBDEs**Test Method:**

1. Disassembly, disjointment and mechanical sample preparation
 - Ref. to IEC 62321-2: 2013, Disassembly, disjointment and mechanical sample preparation.
2. With reference to IEC 62321-1: 2013, tests were performed for the samples indicated by the photos in this report.
 - (1) Screening – Lead, mercury, cadmium, total chromium and total bromine
 - Ref. to IEC 62321-3-1: 2013, Screening for Lead, mercury, cadmium, total chromium and total bromine by X-ray fluorescence spectrometry.
 - (2) Wet chemical test method
 - a. Total Lead, Cadmium, Chromium and Mercury content
 - Ref. to IEC 62321-4: 2013, determination of Mercury in polymers, metals and electronics by ICP-OES.
 - Ref. to IEC 62321-5: 2013, determination of Cadmium, lead and chromium in polymers and electronics and cadmium and lead in metals by ICP-OES.
 - b. Chromium (VI) content
 - For Colourless and coloured corrosion-protected coatings on metals, Ref. to IEC 62321-7-1: 2015, determination of presence of hexavalent chromium (Cr(VI)) in colourless and coloured corrosion-protected coatings on metals by the colorimetric method.
 - For polymers and electronics, Ref. to IEC 62321-7-2: 2017, determination of hexavalent chromium (Cr(VI)) in polymers and electronics by the colorimetric method.
 - c. PBBs, PBDEs
 - Ref. to IEC 62321-6: 2015, determination of polybrominated biphenyls and polybrominated diphenyl ethers in polymers by gas chromatography -mass spectrometry (GC-MS).

ORIGINAL

Test result(s):

Part No.	Part Description	Results of EDXRF					Chemical confirmation results (mg/kg)	Conclusion
		Pb	Cd	Hg	Cr	Br		
1	Black plastic	BL	BL	BL	BL	BL	---	Pass
2	Black rubber ring	BL	BL	BL	BL	BL	---	Pass
3	Silvery metal	OL	BL	BL	BL	---	Pb: 18882 ^(^4)	Pass
4	Black plastic shell	BL	BL	BL	BL	BL	---	Pass
5	Plastic (label)	BL	BL	BL	BL	BL	---	Pass
6	Black plastic	BL	BL	BL	BL	BL	---	Pass
7	Silvery metal	BL	BL	BL	IN	---	Cr(VI): Negative	Pass
8	Black rubber ring	BL	BL	BL	BL	BL	---	Pass
9	Black plastic	BL	BL	BL	BL	BL	---	Pass
10	Black plastic	BL	BL	BL	BL	BL	---	Pass
11	Black plastic	BL	BL	BL	BL	BL	---	Pass
12	Blue wire sheath	BL	BL	BL	BL	BL	---	Pass
13	Brown wire sheath	BL	BL	BL	BL	BL	---	Pass
14	Yellow wire sheath	BL	BL	BL	BL	BL	---	Pass
15#	Black plastic casing	BL	BL	BL	BL	BL	---	Pass
16	Black plastic (bushing)	BL	BL	BL	BL	BL	---	Pass
17	Metal (substrate)	BL	BL	BL	BL	---	---	Pass
18	Silvery metal	(OL)	BL	BL	BL	---	Pb: 23840 ^(^4) Cd: 23	Pass
19	SMD chip (IC)	BL	BL	BL	BL	BL	---	Pass
20	Soldering tin (SMD)	105 (BL)	BL	BL	BL	---	---	Pass
21	Soldering tin (THC)	138 (BL)	BL	BL	BL	---	---	Pass
22	Soldering tin (SMD)	320 (BL)	BL	BL	BL	---	---	Pass
23	Black plastic	BL	BL	BL	BL	IN	PBBs: N.D. PBDEs: N.D.	Pass
24	Copper metal	OL	BL	BL	BL	---	Pb: 21519 ^(^4) Cd: 25	Pass
25	Black plastic	BL	BL	BL	BL	IN	PBBs: N.D. PBDEs: N.D.	Pass
26#	Silvery metal	BL	BL	BL	BL	---	---	Pass
27#	White silica gel	BL	BL	BL	BL	BL	---	Pass

This report is only responsible for the tested sample(s) from the client, the testing result(s) is used for scientific research, teaching or internal quality control. Without the writing agreement of the company, the client is not allowed to copy the report in part (entire copy is excepted).

Part No.	Part Description	Results of EDXRF					Chemical confirmation results (mg/kg)	Conclusion
		Pb	Cd	Hg	Cr	Br		
28	Black plastic	BL	BL	BL	BL	IN	PBBs: N.D. PBDEs: N.D.	Pass
29#	Brown rubber ring	BL	BL	BL	BL	BL	---	Pass
30	Black plastic	BL	BL	BL	BL	BL	---	Pass
31	Silvery metal	OL	BL	BL	BL	---	Pb: 20119 ⁽⁴⁾	Pass
32	Silvery metal	BL	BL	BL	IN	---	Cr(VI): Negative	Pass
33	Black plastic	BL	BL	BL	BL	BL	---	Pass
34	Silvery metal	OL	BL	BL	BL	---	Pb: 22240 ⁽⁴⁾ Cd: 35	Pass
35	Black plastic	BL	BL	BL	BL	BL	---	Pass
36	Silvery metal (nut)	OL	BL	BL	BL	---	Pb: 24029 ⁽⁴⁾ Cd: 44	Pass
37	Black plastic (connector)	BL	BL	BL	BL	BL	---	Pass
38	Black wire sheath	BL	BL	BL	BL	BL	---	Pass
39	Red wire sheath	BL	BL	BL	BL	BL	---	Pass
40	Brown wire sheath	BL	BL	BL	BL	BL	---	Pass
41	Purple wire sheath	BL	BL	BL	BL	BL	---	Pass
42	Black wire sheath	BL	BL	BL	BL	BL	---	Pass
43	Red wire sheath	BL	BL	BL	BL	BL	---	Pass
44	Heat shrink tubing	BL	BL	BL	BL	BL	---	Pass
45-1	Silvery metal	OL	BL	BL	BL	---	Pb: 21612 ⁽⁴⁾ Cd: 24	Pass
45-2	Black plastic support	BL	BL	BL	BL	IN	PBBs: N.D. PBDEs: N.D.	Pass
45-3	Metal (pins)	OL	BL	BL	BL	---	Pb: 20658 ⁽⁴⁾	Pass
46	Soldering tin (THC)	184 (BL)	BL	BL	BL	---	---	Pass
47	Soldering tin (SMD)	150 (BL)	BL	BL	BL	---	---	Pass
48	Black plastic	BL	BL	BL	BL	BL	---	Pass

This report is only responsible for the tested sample(s) from the client, the testing result(s) is used for scientific research, teaching or internal quality control. Without the writing agreement of the company, the client is not allowed to copy the report in part (entire copy is excepted).

Remark:

(^1) “---”= Not Applicable;

(^2) (a) It is the result on total Br while test item on restricted substances is PBBs/PBDEs. It is the result on total Cr while test item on restricted substances is Cr(VI).

(b) The XRF screening test for RoHS elements-The reading may be different to the actual content in the sample be of non-uniformity composition.

© Results are obtained by EDXRF for primary screening, and further chemical testing by ICP-OES (for Pb、Cd、Hg), UV-VIS (for Cr(VI)) and GC/MSD (for PBBs, PBDEs) is recommended to be performed, if the concentration exceeds the below warning value according to IEC 62321-3-1: 2013.

Attached table 1, XRF screening limits in mg/kg for regulated elements in various matrices:

Element	Polymer Materials	Metallic Materials	Electronics
Cd	$BL \leq (70-3\sigma) < X < (130+3\sigma) \leq OL$	$BL \leq (70-3\sigma) < X < (130+3\sigma) \leq OL$	$LOD < X < (250+3\sigma) \leq OL$
Pb	$BL \leq (700-3\sigma) < X < (1300+3\sigma) \leq OL$	$BL \leq (700-3\sigma) < X < (1300+3\sigma) \leq OL$	$BL \leq (500-3\sigma) < X < (1500+3\sigma) \leq OL$
Hg	$BL \leq (700-3\sigma) < X < (1300+3\sigma) \leq OL$	$BL \leq (700-3\sigma) < X < (1300+3\sigma) \leq OL$	$BL \leq (500-3\sigma) < X < (1500+3\sigma) \leq OL$
Br	$BL \leq (300-3\sigma) < X$	N.A.	$BL \leq (250-3\sigma) < X$
Cr	$BL \leq (700-3\sigma) < X$	$BL \leq (700-3\sigma) < X$	$BL \leq (500-3\sigma) < X$

Note: ① BL “below limit” = the result less than the limit.

② OL “over limit” = the result greater than the limit.

③ IN = inconclusive, the region where need further chemical testing by ICP-OES (for Pb、Cd、Hg), UV-VIS (for Cr(VI)) and GC/MSD (for PBBs, PBDEs).

 ④ 3σ = Repeability of the analyser at the action level.

⑤ LOD = Limit of detection.

(^3) (a) mg/kg=ppm=0.0001%;

(b) N.D. = Not detected (lower than RL);

(c) Reporting Limit (RL) and Limit of Directive 2011/65/EU.

Parameter	Unit	Limit	Reporting Limit (RL)
Lead (Pb)	mg/kg	1000	10
Cadmium (Cd)	mg/kg	100	10
Mercury (Hg)	mg/kg	1000	10
Chromium VI (Cr VI)	mg/kg	1000	R1
Group PBBs	mg/kg	1000	R2
Group PBDEs	mg/kg	1000	R2

 R1: Cr(VI) for metal sample, the reporting limit (RL)= Method Detection Limit (MDL)=0.10 ug/cm².

The reporting limit (RL) of Cr(VI) for polymers and electronics is 10mg/kg.

R2: The reporting limit (RL) for single compound of PBBs & PBDEs is 50mg/kg.

(d) According to IEC 62321-7-1: 2015, result on Cr(VI) for metal sample is shown as Negative, Inconclusive or Positive: Negative = Absence of Cr(VI), Inconclusive = Maybe exist Cr(VI), Positive = Presence of Cr(VI).

Colorimetric result (Cr(VI) concentration)	Qualitative result
The sample solution is < the 0.10 ug/cm ² equivalent comparison standard solution	The sample is negative for Cr(VI)-The Cr(VI) concentration is below the limit of quantification. The coating is considered a non-Cr(VI) based coating.
The sample solution is ≥ the 0.10 ug/cm ² and ≤ the 0.13 ug/cm ² equivalent comparison standard solutions	The result is considered to be inconclusive – Unavoidable coating variations may influence the determination. Recommendation: if addition samples are available, perform a total of 3 trials to increase sampling surface area. Use the averaged result of the 3 trials for the final determination.
The sample solution is > the 0.13 ug/cm ² equivalent comparison standard solution	The sample is positive for Cr(VI)-The Cr(VI) concentration is above the limit of quantification and the statistical margin of error. The sample coating is considered to contain Cr(VI)

(^4) Lead (Pb) was exempted by RoHS Directive 2011/65/EU based on Annex III/6(c): Copper alloy containing up to 4% lead by weight.

ORIGINAL

Test Report

Report No.:GNB191015152-02EN

Date: 2019-11-26

Page 7 of 12

B. Phthalates—DBP, BBP, DEHP & DIBP

Test Method: Ref. to IEC 62321-8: 2017

Determination of Phthalates in polymers by Gas Chromatography-Mass Spectrometry (GC-MS)

Test result:

Test item	DBP	BBP	DEHP	DIBP
Maximum Permissible Limit (mg/kg)	1000	1000	1000	1000

Material No.	Test item (mg/kg)				Conclusion
	DBP	BBP	DEHP	DIBP	
1+4+6	N.D.	N.D.	N.D.	N.D.	Pass
2+8	N.D.	N.D.	N.D.	N.D.	Pass
5	N.D.	N.D.	N.D.	N.D.	Pass
9+10+11	N.D.	N.D.	N.D.	N.D.	Pass
12+13+14	N.D.	N.D.	N.D.	N.D.	Pass
15#	N.D.	N.D.	130	N.D.	Pass
16+48	N.D.	N.D.	N.D.	N.D.	Pass
23+25	N.D.	N.D.	N.D.	N.D.	Pass
27#	N.D.	N.D.	N.D.	N.D.	Pass
28+30+33	N.D.	N.D.	N.D.	N.D.	Pass
29#	N.D.	N.D.	190	N.D.	Pass
35+37+45-2	N.D.	N.D.	N.D.	N.D.	Pass
38+39	N.D.	N.D.	N.D.	N.D.	Pass
40+41+42+43	140	N.D.	N.D.	N.D.	Pass
44	N.D.	N.D.	N.D.	N.D.	Pass

- Remark: 1. Reporting Limit (RL) for BBP, DBP, DEHP, DIBP=50mg/kg.
 2. N.D. = Not Detected (<RL).

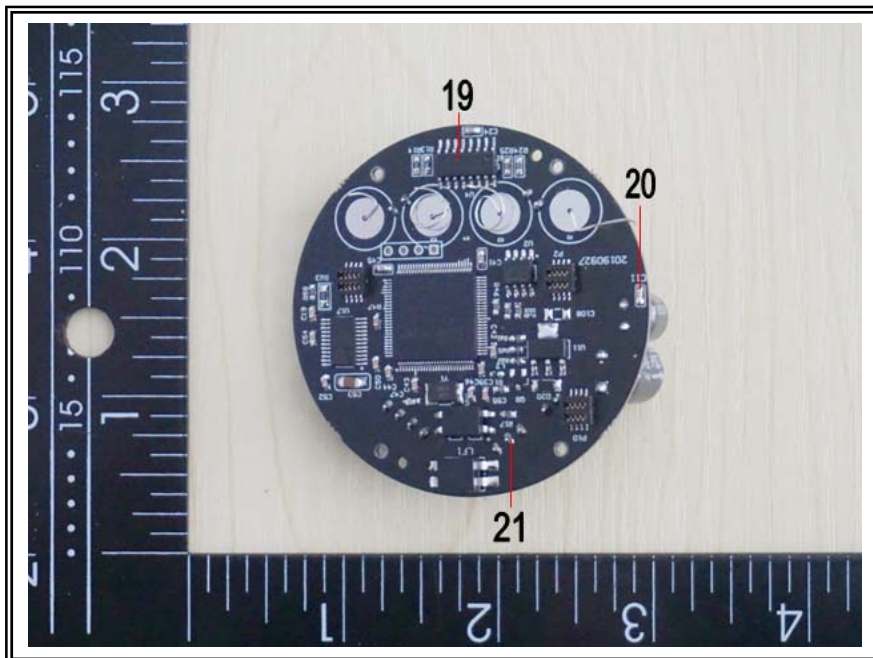
Sample photo(s):



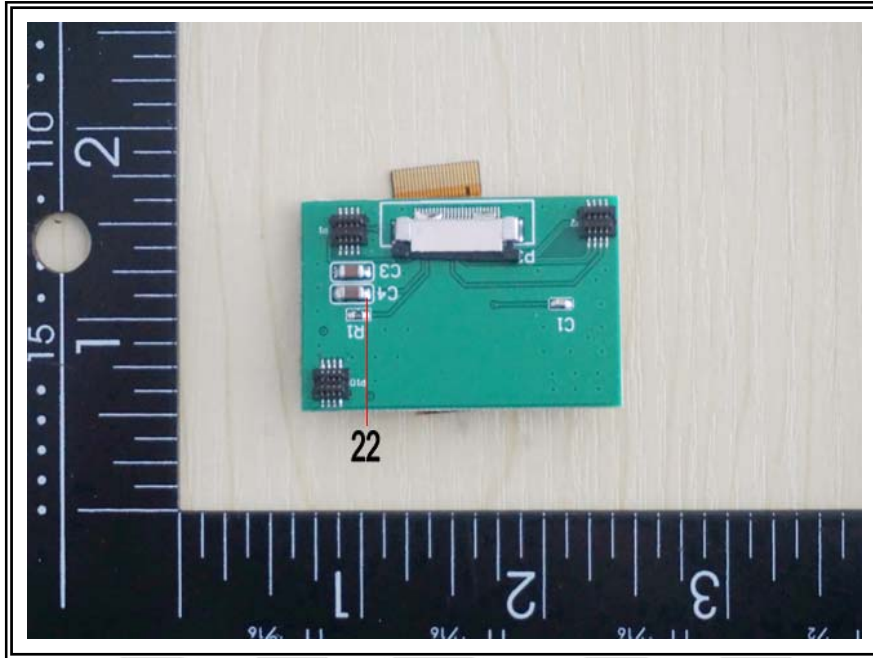
Test item: Intelligent Valve Positioner



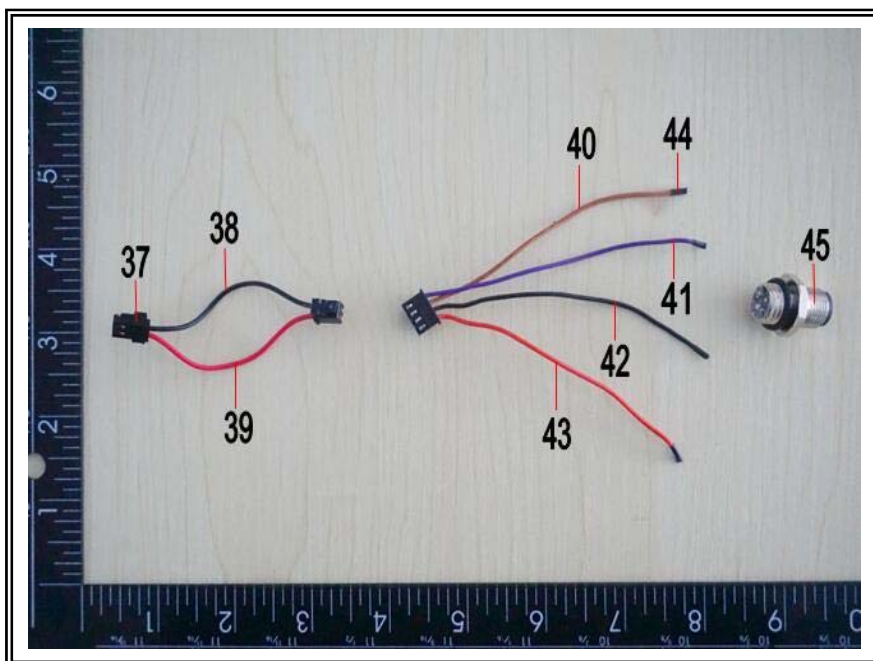
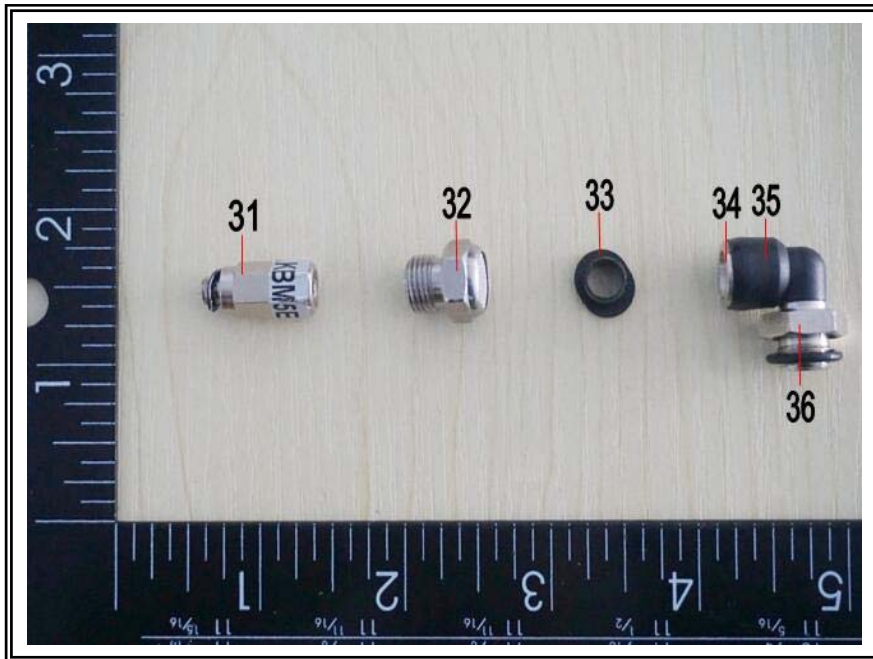
This report is only responsible for the tested sample(s) from the client, the testing result(s) is used for scientific research, teaching or internal quality control. Without the writing agreement of the company, the client is not allowed to copy the report in part (entire copy is excepted).



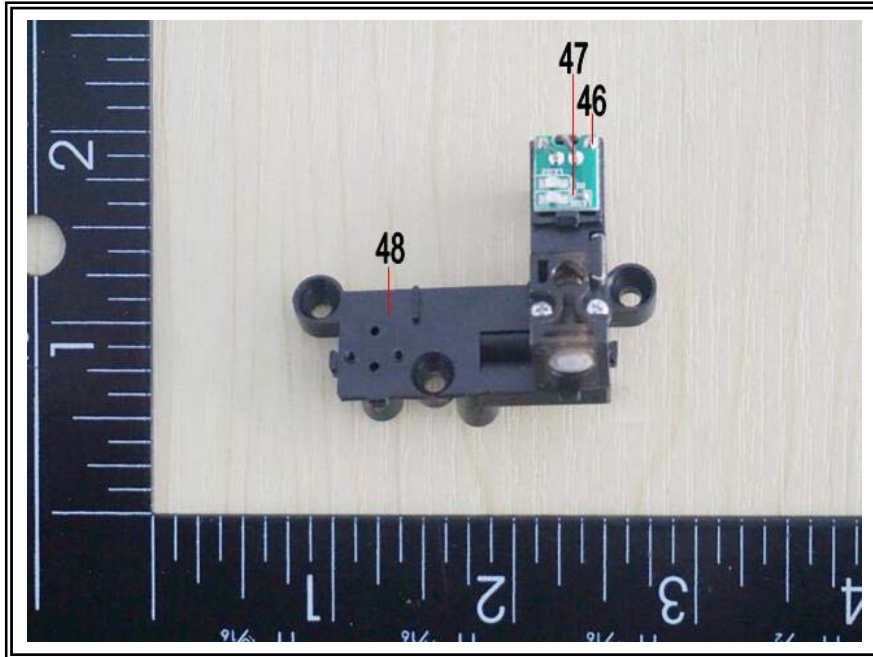
This report is only responsible for the tested sample(s) from the client, the testing result(s) is used for scientific research, teaching or internal quality control. Without the writing agreement of the company, the client is not allowed to copy the report in part (entire copy is excepted).



This report is only responsible for the tested sample(s) from the client, the testing result(s) is used for scientific research, teaching or internal quality control. Without the writing agreement of the company, the client is not allowed to copy the report in part (entire copy is excepted).



This report is only responsible for the tested sample(s) from the client, the testing result(s) is used for scientific research, teaching or internal quality control. Without the writing agreement of the company, the client is not allowed to copy the report in part (entire copy is excepted).



Photograph(s) depicting resubmitted component	Sample Resubmitted Date
<p>A photograph showing three small circular components on a light-colored surface. Callout lines point to them: '15#' points to a black component with a wire, '26#' points to a silver metal ring, '27#' points to a white plastic ring, and '29#' points to a small red ring. A black ruler with white markings is placed to the left and bottom of the components for scale.</p>	<p>2019-11-15</p>

GIG authenticate the photo(s) on original report only

*****End of Report*****

This report is only responsible for the tested sample(s) from the client, the testing result(s) is used for scientific research, teaching or internal quality control. Without the writing agreement of the company, the client is not allowed to copy the report in part (entire copy is excepted).